

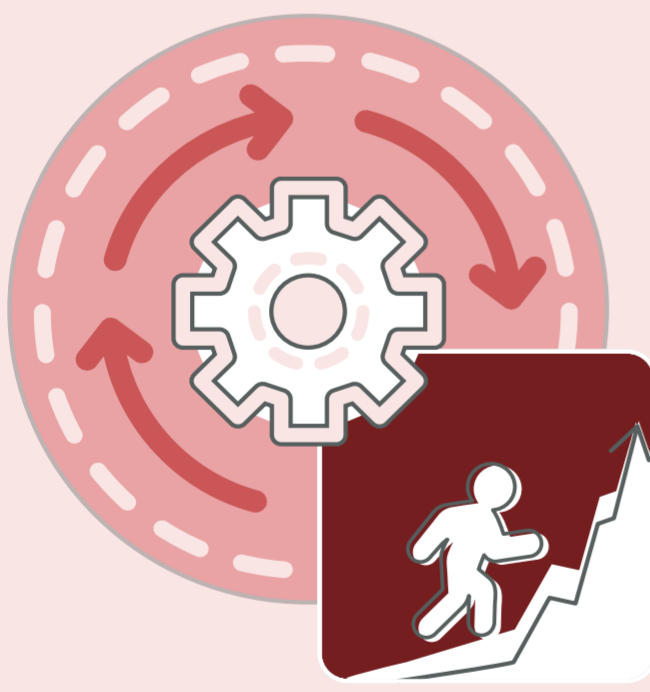
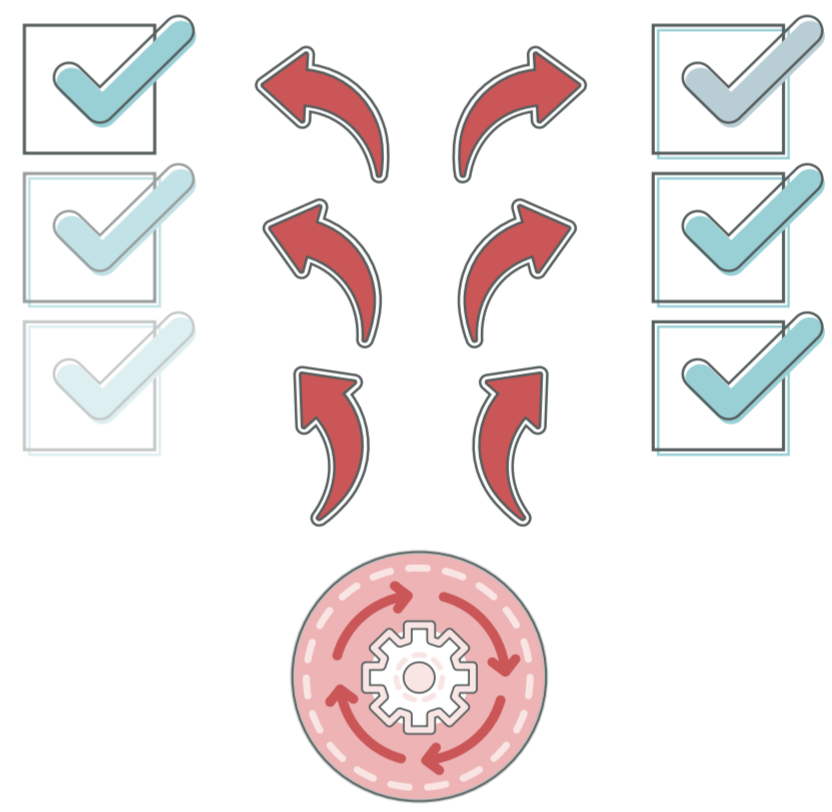
# AUTOMATION: It's About More Than Speed

A system's overall equipment effectiveness (OEE) depends on more than simply speed. Automation allows all the factors that affect OEE - availability, performance, quality and rate - to be efficiently maximized.



## 1 Consistency is Key

Speed alone does not drive production efficiency. Consistency of throughput and predictable outcomes heavily affect efficiency.

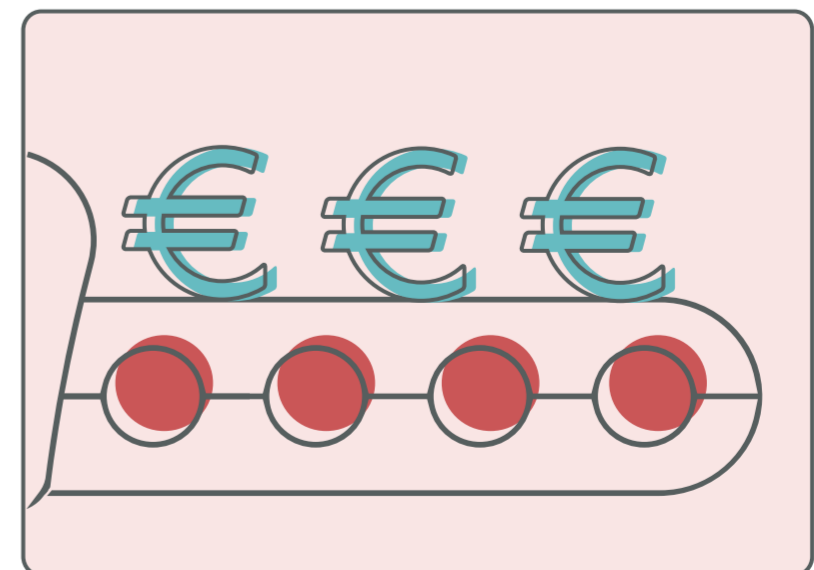


## 2 Reach Peak Efficiency

Running too fast for too long has serious negative consequences, such as mistakes or lowered overall quality. It also increases premature equipment wear and the chance of an unexpected stoppage. Dynamically controlling your rate based on demand provides the best efficiency.

## 3 Consistency Drives Profits

A predictable, reliable throughput reduces your cost to deliver, and maximizes the value of automation. When your results are consistent and your speed is optimized, you know your system is running at peak efficiency.



[Click here](#) to learn more about Automation