



green  
GLUING

## PROTECTING YOUR PRODUCTS AND CONSUMERS

Tamper Evidence with Adhesive Application and Quality Assurance

## BEING PREPARED FOR THE NEW EU DIRECTIVE

Robatech and its partner W.H.Leary together offer a variety of solutions to comply with the new EU directives to ensure patient safety and the marketability of your products.

### Tamper Evident Pharmaceutical Packaging

Medicines for humans use need more care in their packaging than most other products do. Any failure in their packaging could have unforeseeable consequences.

The EU directives 2011/62/EU and EN 16679 also known as the "Falsified Medicines Directive" ask for security features for certain medicines to verify «authenticity and identification of individual packaging», and «a device allowing verification of whether the outer packaging has been tampered with».

This means serialized code on each packaging (e.g. 2D code in combination with unique printed code on each package) so partners of the supply chain can verify the packaging by means of a database entry. Furthermore, detect tamper evidence to ensure that any illicit opening is immediately apparent.

### Serialization and Code Reading (Track & Trace)

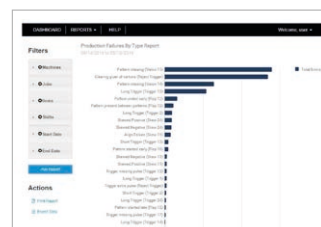
Inkjet iQTM Serialization prints a unique code on every packaging and can produce a certificate of analysis allowing plants to offer professional responses and corrective actions if needed. Each product can be identified and tracked individually throughout the supply chain. The iQTM Smart Services delivers real-time data from the production floor to a browser or smart device.

Different solutions for code reading, from color pharmacode to 1D and 2D code reading, scan every packaging to ensure it is the right type and no mixed products leave the production process.

### Quality Assurance (Detection & Rejection)

Fail-safe solutions ensure every packaging is inspected by each detection station. Reliable rejection devices guarantee that defective products are safely removed from the production line automatically, without interrupting the machine and reducing productivity.

The quality assurance systems provide a secure mean of scanning every single product for multiple defects automatically on the run, ensuring an immediate alert in case of any potential problems.



Real-Time Data Collection



Customized Serialization



2D Code Reading



Barcode Reader  
(1D & Pharmacode)

# PRECISE, EFFICIENT AND SAFE SOLUTIONS

## GLUING METHODS

### Adhesives

### Characteristics

Cold glue

Irreversible bonding  
Once set Long setting time means extra press sections in the production line.

Hot melt

Adhesive Immediate bonding  
Not temperature resistant. Adhesive softens when heated and hardens again by reducing the temperature. An illicit opening could occur.

Combi gluing  
(cold & hot)

Immediate sealing by hot melt and irreversible bonding by cold glue

## Tamper Evidence

Different methods have become established in field use for the purpose of reliably indicating the initial opening of folding boxes. Their effectiveness in providing tamper evidence varies. Gluing the flaps of the box using glue dots is the most economical solution.

## Gluing Solutions

Depending on your requirements and standards cold glue or a combination of cold glue and hot melt is the most effective solution. Carton flaps are glued which restricts access to the product unless flaps are cut or torn, visibly damaging the box when opened for the first time.

## Adhesive Application Solutions

All adhesive application systems are energy optimized and ensure the highest safety and quality standards. The jetting heads ensure a consistent and precise adhesive application with a clean cut-off behavior even at high speeds. The hot melt application heads are insulated to protect operators and products against heat.

The adhesive application equipment is easy to maintain, reduces operational costs to a minimum and maximizes uptime.

## Adhesive Application Detection

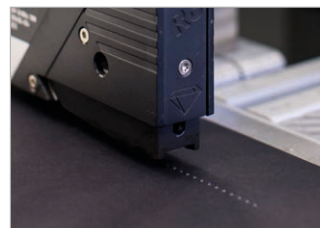
In addition, sensors for hot melt and cold glue not only detect the glue but also the thickness of the glue bead. Therefore, it guarantees the presence of glue and that there is the right quantity to securely seal the packaging.



Cold Glue Application



Sensor for Cold Glue Detection



Hot Melt Dot and Bead Application



Sensor for Hot Melt Detection

## Your Advantages

- **Modular solutions** to meet your requirements of today and tomorrow
- **Comply with the EU directives** 2011/62/EU and EN 16679
- **No mixed products** and full control through track & trace solution
- **Improves process efficiency** and ensures maximum uptime
- **Guaranteed highest quality standards** and energy efficiency for a sustainable production
- **Increased safety** for your operators and consumers



## WORKING TOGETHER FOR A STRONGER BOND

Robatech Group and W. H. Leary have agreed to join forces in a worldwide partnership which will allow both companies to further support their customers with valuable products, service and support. Robatech is representing Leary globally except of Canada, Mexico, South Korea, UK and USA. Together they offer the most comprehensive cold glue, hot melt and quality assurance solutions with offices in over 70 countries worldwide.

### As a customer you get all the advantages:

- Precise and reliable high-end solutions
- Local competence for consultancy, service and parts worldwide
- Modularity and compatibility of components
- Energy efficient and sustainable solutions
- Test laboratory for customer trials



**Robatech Ltd.** with headquarters in Switzerland, is a worldwide leading manufacturer of highquality application systems for industrial glue application. Our precise adhesive application equipment supports our customers in different industries in the efficient processing of hot melt adhesive and cold glue. As service and technology leader for green adhesive application solutions, we count on sustainability. Our products are energy- and consumption-optimized and thus reduce environmental pollution.



**W. H. LEARY COMPANY, INC.** is corporately headquartered in Tinley Park, IL, USA and is a leading innovative provider for cold Glue Application, Quality Assurance and Data Collection systems. Supplying solutions from basic glue application to the latest in-line print inspection system, all of Leary's products have been designed with a common goal in mind: to allow customers to benefit from leading edge technologies which maximize their machine's potential and deliver 100% fit-for-use products.



Copyright Robatech AG 2018 | Subject to change

Robatech AG | Pilatusring 10 | 5630 Muri | Switzerland  
Phone +41 56 675 77 00 | [info@robatech.ch](mailto:info@robatech.ch) | [www.robatech.com](http://www.robatech.com)

GLUING SOLUTIONS **ROBATECH**